

MPS Catalog Number

DS-25M

Date: 2/13/2023

Rev B

End Fittings

Tower End Fitting:

Clevis

Line End Fitting:

Tongue

Color:

Grey

Rod Diameter

16 mm

Material

Corona Ring (Tower):

None

Corona Ring (Line):

None

Number of Sheds:

7

Weight Estimate:

3.2 lbs

1.5 kg

Dimensional Values

Section Length (A):

18.7 in

475 mm

Shed Diameter (B):

3.9 in

99 mm

Shed spacing (C):

1.77 in

45 mm

Dry Arc Distance:

13.60 in

345 mm

Leakage Distance:

31.5 in

800 mm

Electrical Values

60 Hz Dry Flashover:

150 kV

Min. Withstand

140 kV

60 Hz Wet Flashover:

135 kV

Min. Withstand

117 kV

CIFO Positive:

255 kV

Min. Withstand

230 kV

CIFO Negative:

265 kV

Min. Withstand

239 kV

Mechanical Values

Specified Mechanical Load (SML):

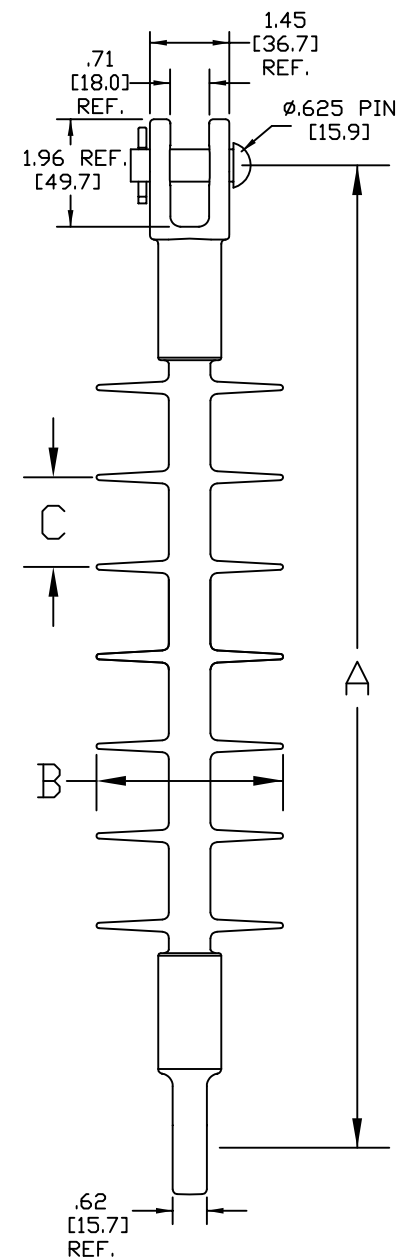
15,737 lbs

70. kN

Routine Test Load (RTL):

7,868 lbs

35. kN

 Ø.69
[17.5]
REF.

Part Marking

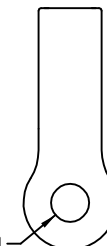
MPS

ANSI DS25M

CSA DS35

SML 15.7klbs/70kN

Date Code

 Ø.69
[17.5]
REF.


Dimension: inches [millimeters]

 Silicone rubber sheath and sheds complies with applicable
ANSI and CSA standards.