

ISS	REVISED BY:	REVISION DATE	ECO #
1	SF	10/24/24	13136

NOTES:

MATERIAL:

PLATE - STEEL, 36 KSI YIELD

COUPLER - STEEL, 40 KSI YIELD

FINISH:

PAINT, DARK GREEN

HOT DIP GALVANIZED PER ASTM A153 (HDW)

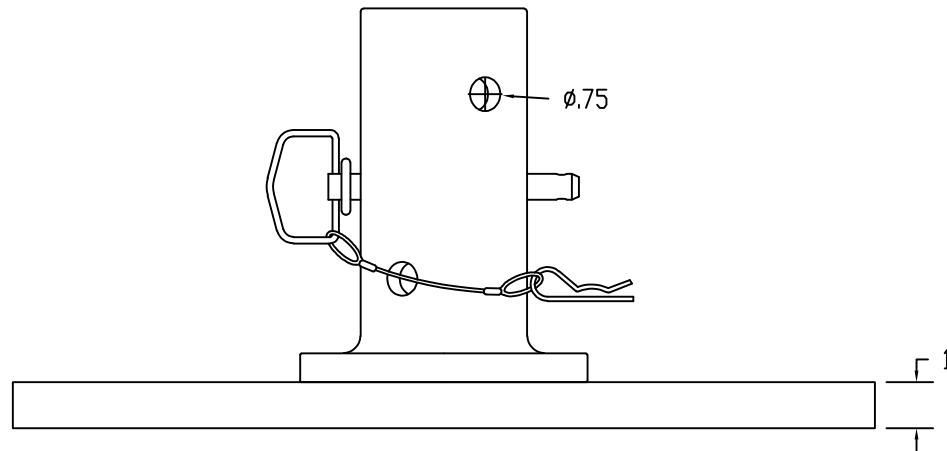
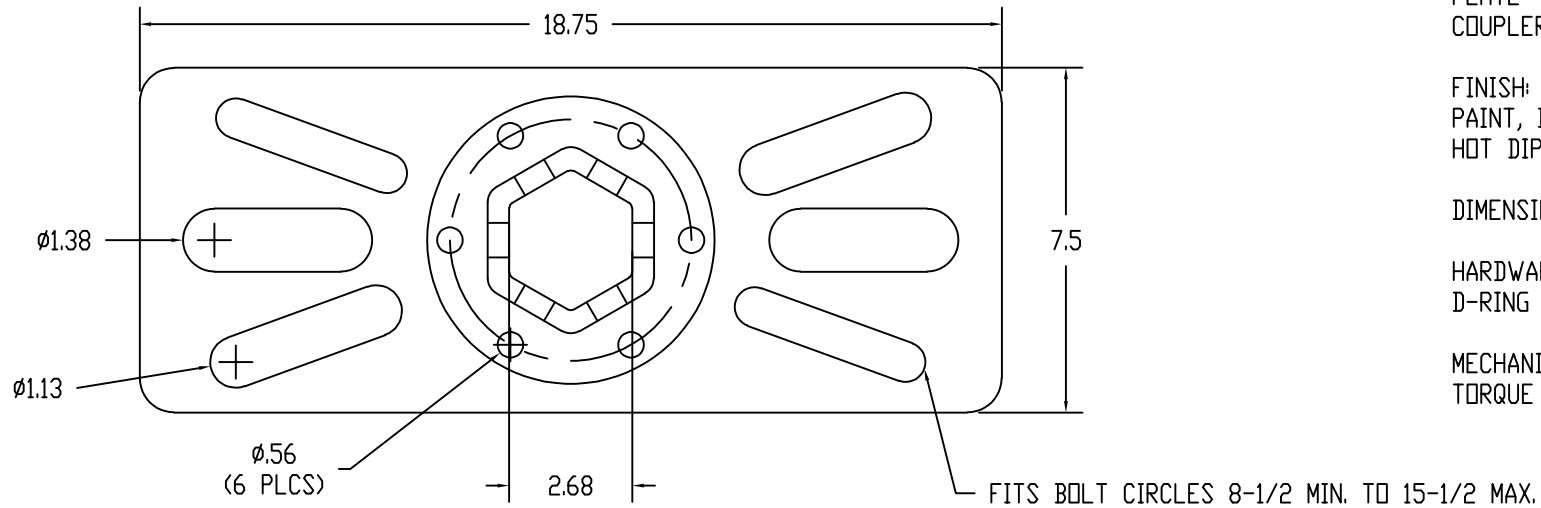
DIMENSIONS: INCHES

HARDWARE:

D-RING HITCH PIN (1 EA)

MECHANICAL RATING:

TORQUE - 20,000 FT-LBS



CATALOG NUMBER:			D4806-0016
SHEET NAME:		Sheet1	1 OF 1
DRAWING DESCRIPTION:			
SLF ANCHOR TOOL			
2-5/8 KBA			
DRAWN BY:	###	DATE:	08/19/21
APPRVD:	###		



WWW.MACLEANPOWER.COM

This drawing contains confidential information that is the property of MacLean Power, L.L.C. ("MacLean"). Use of MacLean's confidential information without MacLean's express written consent is strictly prohibited and may expose you to legal liability. If you believe that you received this material in error, please destroy it or return it to MacLean Power, L.L.C., Kingsley Park Five, 481 Munn Rd. Suite 300, Fort Mill, SC 29715, USA.