

ISS	REVISED BY:	REVISION DATE	ECO #

# NOTES:

## MATERIAL:

PLATE - STEEL, 36 KSI YIELD

COUPLER - STEEL, 40 KSI YIELD

## FINISH:

PAINT, DARK GREEN

HOT DIP GALVANIZED PER ASTM A153 (HDW)

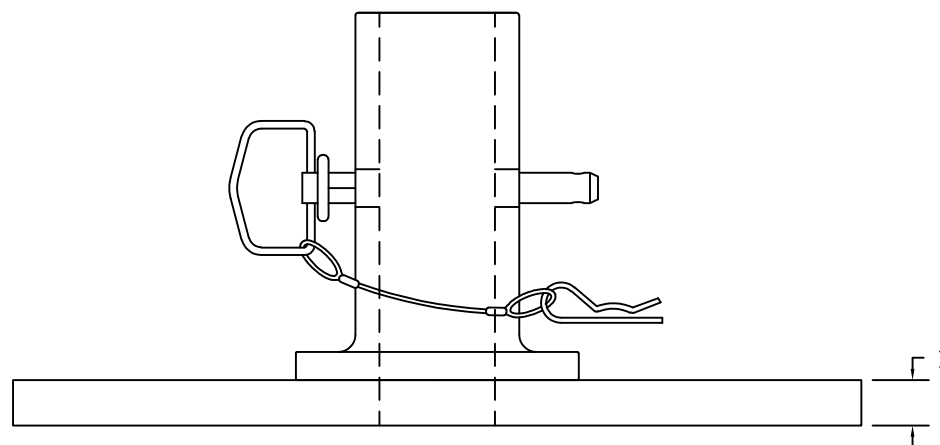
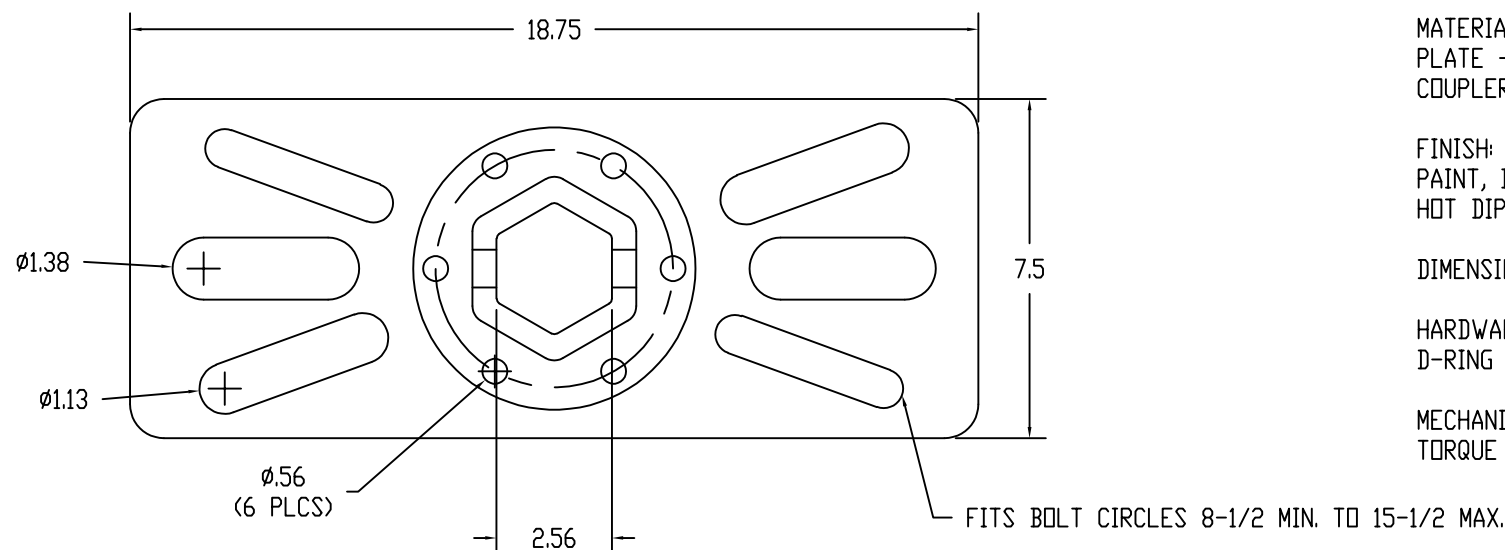
## DIMENSIONS: INCHES

## HARDWARE:

D-RING HITCH PIN (1 EA)

## MECHANICAL RATING:

TORQUE - 20,000 FT-LBS



This drawing contains confidential information that is the property of MacLean Power, L.L.C. ("MacLean"). Use of MacLean's confidential information without MacLean's express written consent is strictly prohibited and may expose you to legal liability. If you believe that you received this material in error, please destroy it or return it to MacLean Power, L.L.C., Kingsley Park Five, 481 Munn Rd. Suite 300, Fort Mill, SC 29715, USA.



WWW.MACLEANPOWER.COM

CATALOG NUMBER: D4806-0015		
SHEET NAME: Sheet1		1 OF 1
DRAWING DESCRIPTION: SLF ANCHOR TOOL 2-1/2 KBA		
DRAWN BY: ###	DATE: 08/19/21	APPROV'D: ###